

In the Mont Saint-Michel Bay,

I SORT

I COMPOST

I RECYCLE

I think ZERO WASTE



Why think ZERO WASTE ?

The Mont Saint-Michel and its bay, listed as a UNESCO World Heritage site, is ranked among the most travelled to sites in France with **over two million visitors a year**. This tourism rate leads to **an important production of wastes which is reinforced**, especially since 2020, by an increasing number of takeaway options in shops and restaurants which generate new types of wastes.

The law on Energy Transition for Green Growth and the Waybill for Circular Economy have set out goals on waste reduction : **To reduce by 50% the amount of buried wastes by 2025 and, to apply to all, the obligation to sort organic waste at its source, by December 31st, 2023.**

Facing this new type of consumerism as well as regulatory demands soon to be made mandatory by the law, **the township of Mont Saint-Michel as well as those along the litoral in the Bay** have enrolled in an action plan targeting a Zero Waste goal.

We thank you all to contribute to reach these goals !



During the holidays, I KEEP ON SORTING MY WASTES



Within our borders, it's easy : **All packaging and paper goes into the recycling bin.**

Find our recycling guide on www.msm-normandie.fr

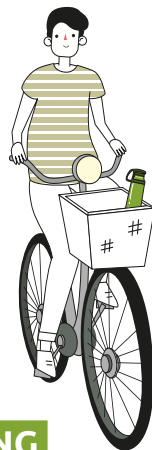


To find out where the nearest recycling bins are : web.citeo.guidedutri.fr/point-de-collecte

On a hike or on my bike,

I BRING MY REUSABLE WATER BOTTLE

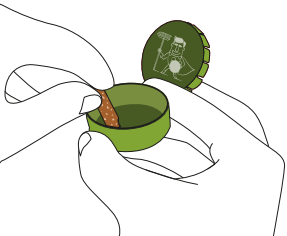
Did you know that if every visitor in the Bay used a reusable water bottle, over 2 million plastic bottles could be avoided ?
So, on a hike or on a bike, just like the rest of the year, bring your own reusable water bottle !



On the beach,

I DO NOT THROW OUT ANYTHING

Cigarette stubs are the most found pollutants on the beach ! The solution : get yourself **a pocket ashtray**. Small, you can bring it anywhere, allowing you to store your stubs until you can find an appropriate bin.



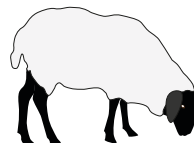
One cigarette stub pollutes about 500L OF WATER.

(Reference : Centre de l'information de l'eau)

Whilst in nature,

I PRESERVE LOCAL FAUNA

Thrown in nature, plastic degrades slowly and releases microparticles that may be ingested by wild animals. Do not throw your rubbish just anywhere ! Sort through your wastes, reduce them as much as possible and know that **the best waste is the one that is not produced in the first place.**



On a picnic,

I TAKE MY WASTES WITH ME AS I GO

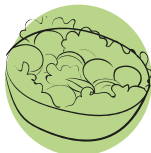
Most often, picnic areas will only offer a single waste bin which is only for collecting domestic waste. These bins will not be sorted through and all wastes will end up buried or burnt instead of being recycled, even those that are recyclable.



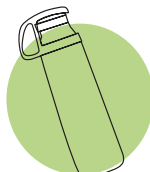
Opt in favor of a Zero Waste picnic. How ? With a few simple tricks :



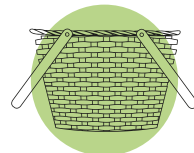
Use washable
and reusable dishes
and cutlery.



Prefer
homemade
meals.



Bring your own
reusable bottle.



Bring everything
in a backpack,
basket or
reusable tote.

After your picnic, take your wastes (crisps packets, sandwich wraps, ...) back to your home or place of stay during your holidays to dispose of in the appropriate bins after sorting through the recyclables.



1 000 000 TONS OF WASTES are left on sites every year in France

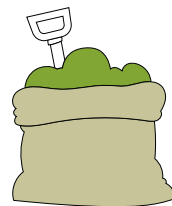
(Reference : Gestes Propres)

During the Holidays, **I COMPOST TOO !**



Several campsites, gites and other holiday parks and accomodations provide compost bins so that visitors may **compost their organic wastes**. Make sure to ask your host.

You will find useful information on the ins and outs of composting on www.msm-normandie.fr



Our domestic bins usually contain OVER 45% OF ORGANIC WASTES WHICH COULD BE COMPOSTED.



Want to go further ? Find our Zero Waste guide on www.msm-normandie.fr

For any inquiries :

Service déchets de la communauté d'agglomération

Mont Saint-Michel – Normandie

02 33 68 68 96 - service.dechets@msm-normandie.fr



COMMUNAUTÉ D'AGGLOMÉRATION
**MONT SAINT-MICHEL
NORMANDIE**

monts
michel
la baie, le village, l'abbaye